



2" & 3 1/2" Verticals

with Matching

2" Horizontals

Retail Price List 5-5-2014

Prices subject to change without notice

Oxford House, Inc 606 W St Rd 18, Fowler, IN 47944 Phone 800-533-9464 Fax 765-884-3274
Sales@oxford-House.com WWW.Oxford-House.com

Vertical Pattern Price Index

Fabric (Freehang or Groover Insert)

Pattern	Group #
Arial	6
Calgary (FR)	5
Cascade	5
Ellie	1
Etamine	4
Euro Blackout	5
Itaca	3
Jakarta	6
Miami	5
Mistral	4
New Liza	1
Olympic	4
Quebec (FR)	5
Roma	4
Soutch Beach Blackout	3
Toronto	4
Venice	4
Vision 351	6
Vision 550	6
Westbrook	6
Whisper	1

Headrail only purchases:
NET cost per inch

3.5" Versatrack	.80 an inch
2" Versatrack	1.60 an inch
3.5" Decomatic	1.00 an inch

PVC (Freehang Only)

Pattern	Group #
Artisan -also S shaped	D
Aspen	E
Aspiration	E
Athens—also S Shaped	E
Bali	E
Beckley	E
Bella	E
Bono	C
Bordeaux—also S shaped	E
Brighten	C
Cadiz	C
Cala	D
Calypso	E
Capri	E
Carrara	B
Casual Wood	E
Catalina	A
Challenger	A
Ciara *K	E
Cindy	C
Concord— also S shaped	D
Corly	C
Crawford	D
Crepe Stitch	C
Emerson	E
Fresno	D
Frost	C
Glendale	B
Hamilton	B
Hampton-also S shaped	E
Island	D
Jasmine	E
Jubilee	E
Keona	C

PVC (Freehang Only)

Pattern	Group #
Larissa also S shaped	E
Leisure Wood	B
Leno	D
Lindy	E
Madiera	D
Maestro-also S shaped	E
Mayfair	B
Metallic Rio	E
Mia	C
Monaco	E
Natural Weave	E
Nevar	E
Newbury	C
Nouveau	E
Odessa	E
Orchid	E
Palms	B
Parchment	C
Penland	B
Perforated	D
Pinnacle	B
Provincial-also S shaped	E
Ridgeway	B
Rio	E
Riva	D
Rome	E
Rustic	D
Savannah	B
Sedona	D
Shannon	E
Somerset	C
Stitchbond	C
Tiki	E
Valentino-also S shaped	E
Waterford—also S shaped	E
Westfield	D
Wilde Wood	D
Willow	E

Motorization Available - Call for Quote 800-533-9464

GENERAL INFORMATION

Color Matching: To insure color match, all verticals must be ordered at same time. Colors and Styles subject to change without notice.

Factory Deductions: For Inside Mount, factory will deduct 1/2" from length and 1/4 from width.

Free Hang Verticals (FH) will be shipped with sewn-in weights as standard unless specified other wise.

Please examine all merchandise and packages for accuracy and to make sure all parts, brackets, etc. are included before sending them to be installed. While we constantly strive to make sure each order is exact and complete, we do occasionally make mistakes, and we cannot be responsible for trip charges or reinstallation charges.

Heat registers, electric baseboard heat, or other heat sources can give off heat that is intense enough to scorch fabrics or melt PVC vanes or channel panels. Please allow clearance around these heat sources to avoid these problems.

TERMS OF SALE

Cancellations: Orders cannot be cancelled after goods are cut.

Minimum invoice amount is \$10.00

RETURNS: Due to the custom nature of our products, we do not accept returns for credit. For repair and returns, prior authorization is needed. Call Customer Service for details.

CLAIMS: All claims, i.e., shortages, concealed damages, or credits must be made within 30 days of invoice.

72 HOUR RUSH ORDERS: At your request we will give your order special handling and ship within 3 production days. The extra charge is \$10 net per blind, with a \$25 minimum per order.

3 1/2" PVC Verticals



Group A																		Single Vanes
WIDTH TO:	25"	38"	50"	63"	75"	78"	85"	88"	100"	113"	125"	138"	150"	163"	175"	188"	191"	
48" FH	182	223	263	303	340	362	382	384	421	459	497	538	576	615	655	695	704	11
60" FH	191	235	278	322	363	387	409	410	450	493	534	580	621	665	709	751	760	12
72" FH	200	245	295	340	387	413	435	437	502	572	627	677	723	780	840	897	919	14
84" FH	207	257	310	360	409	435	461	465	530	606	667	718	770	829	893	951	976	15
96" FH	215	268	326	379	431	459	489	497	565	643	707	764	817	883	950	1016	1041	16
108" FH	223	278	340	397	456	486	516	523	595	677	746	805	862	932	1004	1073	1098	17
120" FH	230	291	356	416	477	507	543	551	626	710	781	848	908	980	1057	1128	1157	18
132" FH	236	302	372	435	500	532	568	578	656	746	821	889	953	1031	1110	1187	1213	18
144" FH	244	313	386	456	523	557	595	604	687	779	858	931	999	1080	1161	1243	1271	19
Dust Cover Valance	32	39	50	58	70	75	82	86	92	102	113	123	134	143	154	165	168	
Laserlite Single Double	86	114	138	167	194	206	219	223	246	272	299	326	353	380	404	432	437	
	135	184	227	274	319	340	364	369	408	456	500	546	590	637	681	729	739	

Group B																		Single Vanes
WIDTH TO:	25"	38"	50"	63"	75"	78"	85"	88"	100"	113"	125"	138"	150"	163"	175"	188"	191"	
48" FH	209	261	317	369	421	448	475	477	526	579	628	684	736	786	840	893	907	12
60" FH	225	284	343	397	450	480	489	507	561	615	668	726	780	834	891	943	959	14
72" FH	235	293	353	408	464	494	505	524	580	639	692	754	809	865	926	981	995	15
84" FH	242	298	362	422	479	510	523	542	599	660	718	781	840	897	960	1021	1035	16
96" FH	246	308	373	433	494	526	540	560	620	681	750	807	868	931	995	1056	1072	18
108" FH	250	314	381	447	509	542	556	576	641	702	768	836	899	962	1030	1093	1109	18
120" FH	257	322	390	458	523	557	574	593	660	753	791	863	928	995	1063	1149	1162	19
132" FH	260	329	402	470	540	574	591	612	678	789	829	909	973	1048	1119	1164	1185	20
144" FH	266	338	410	483	553	589	606	628	699	799	863	944	1016	1106	1126	1248	1296	22
Dust Cover Valance	34	43	56	64	78	83	91	95	101	112	124	135	148	158	170	182	184	
Laserlite Single Double	95	104	126	151	176	187	200	202	224	247	271	296	320	346	368	393	398	
	149	167	206	248	289	308	331	335	371	414	454	497	537	580	619	662	671	

Group C																		Single Vanes
WIDTH TO:	25"	38"	50"	63"	75"	78"	85"	88"	100"	113"	125"	138"	150"	163"	175"	188"	191"	
48" FH	250	315	379	442	507	540	573	576	636	702	764	833	896	960	1027	1091	1107	14
60" FH	267	340	413	483	552	587	627	628	695	764	833	908	974	1044	1116	1188	1204	16
72" FH	281	355	433	507	597	636	659	662	751	856	943	1022	1095	1158	1272	1358	1390	17
84" FH	289	371	450	531	627	668	692	695	790	901	991	1075	1152	1232	1338	1430	1462	18
96" FH	299	384	471	555	643	684	732	743	845	959	1058	1150	1236	1338	1442	1540	1577	19
108" FH	319	402	499	595	688	732	787	800	908	1031	1138	1236	1331	1440	1551	1657	1695	20
120" FH	322	424	530	634	737	784	842	854	970	1099	1214	1321	1425	1541	1660	1775	1812	22
132" FH	338	447	561	671	782	833	896	910	1032	1170	1293	1408	1517	1641	1767	1892	1932	22
144" FH	354	470	592	709	829	883	950	965	1095	1238	1369	1493	1609	1743	1877	2008	2051	24
Dust Cover Valance	38	47	61	70	85	91	100	104	111	123	137	149	162	173	186	200	203	
Laserlite Single Double	104	114	138	167	194	206	219	223	246	272	299	326	352	380	404	432	437	
	163	184	227	274	319	340	364	369	408	456	500	546	590	637	681	729	739	

3 1/2" PVC Verticals



Group D																		Single Vanes
WIDTH TO:	25"	38"	50"	63"	75"	78"	85"	88"	100"	113"	125"	138"	150"	163"	175"	188"	191"	
48" FH	259	322	390	450	512	546	579	581	642	702	765	832	892	947	1012	1073	1089	16
60" FH	270	338	410	482	552	588	627	629	697	769	838	914	982	1046	1118	1189	1207	18
72" FH	286	365	449	527	606	645	691	695	794	901	980	1087	1155	1236	1332	1423	1456	18
84" FH	303	392	486	572	664	707	754	761	868	982	1070	1177	1265	1358	1461	1563	1597	19
96" FH	313	411	512	611	707	753	811	850	936	1059	1169	1274	1370	1482	1595	1708	1746	22
108" FH	331	439	549	656	765	814	876	889	1010	1142	1263	1376	1482	1603	1727	1847	1887	22
120" FH	350	465	587	704	818	872	940	955	1083	1226	1356	1476	1592	1721	1856	1986	2028	24
132" FH	366	493	623	749	874	931	1006	1020	1156	1309	1447	1578	1703	1843	1985	2125	2168	25
144" FH	386	522	659	795	930	990	1070	1086	1231	1391	1510	1679	1813	1964	2115	2263	2310	27
Dust Cover Valance	41	52	67	77	93	100	110	115	122	135	150	163	179	190	205	219	224	
Laserlite Single	115	125	152	184	212	226	242	245	271	299	328	358	387	418	445	476	482	
Double	180	201	249	301	350	373	401	406	449	501	550	601	649	701	750	801	810	

Group E																		Single Vanes
WIDTH TO:	25"	38"	50"	63"	75"	78"	85"	88"	100"	113"	125"	138"	150"	163"	175"	188"	191"	
48" FH	269	343	420	492	562	598	639	643	710	782	855	930	1001	1074	1149	1222	1240	18
60" FH	285	364	448	527	605	644	688	691	767	846	923	1007	1086	1166	1247	1327	1345	19
72" FH	299	386	475	561	647	689	738	768	840	957	1052	1142	1226	1325	1425	1523	1556	22
84" FH	312	406	501	596	688	732	782	814	895	1017	1122	1218	1311	1415	1523	1627	1663	23
96" FH	327	427	530	631	730	778	835	845	952	1083	1195	1299	1399	1509	1627	1739	1775	25
108" FH	340	449	558	667	771	821	884	895	1007	1146	1264	1377	1482	1602	1723	1843	1883	29
120" FH	356	470	587	702	815	867	932	943	1065	1208	1336	1452	1566	1692	1822	1948	1988	32
132" FH	370	491	615	734	857	912	981	993	1120	1271	1403	1539	1649	1822	1959	2137	2137	34
144" FH	397	524	656	783	910	969	1043	1055	1188	1348	1487	1619	1746	1885	2029	2170	2213	35
Dust Cover Valance	46	57	73	85	103	110	121	126	134	149	165	180	196	209	226	242	248	
Laserlite Single	126	138	168	201	234	249	266	269	298	330	361	393	425	460	489	523	530	
Double	198	222	275	331	386	411	440	446	493	552	604	661	714	770	825	881	894	

VERTICAL TRACK OPTIONS

Motorization Available: Call for Quote

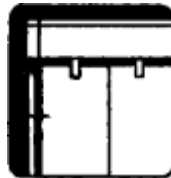
Net Vertical Headrail Cost : 3.5" Versatrack: .80 an inch
 2" Versatrack: 1.60 an inch
 Decomatic: 1.00 an inch



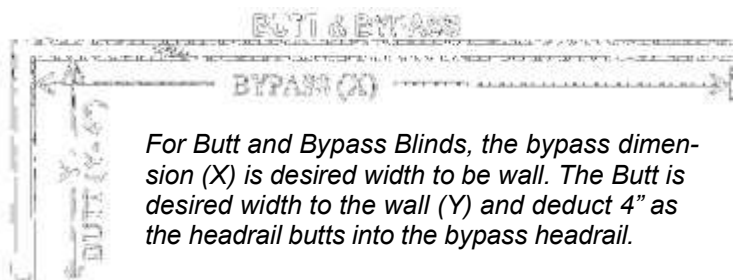
Butted Blinds – The vertical track system can be assembled so two headrails can butt together end to end. This procedure would be used when the area to be covered by the blind exceeds 16" in width. The controls for rotation and traversal would remain independent with each headrail; however, there would be no light gap between the blinds when they are completely closed.



Cut-Outs – Any blind can be ordered for cut-out installations (around air condition-ers, heat registers, or other obstructions). Be sure to provide a drawing with the exact width and length to be cut out. Surcharge: \$40.00 (Net Dealer Cost).



Wand Control -Vane rotation is achieved by a clear plastic wand.



For Butt and Bypass Blinds, the bypass dimension (X) is desired width to be wall. The Butt is desired width to the wall (Y) and deduct 4" as the headrail butts into the bypass headrail.

3 1/2" Fabric Verticals



Group 1																		Single Vanes
WIDTH TO:	25"	38"	50"	63"	75"	78"	85"	88"	100"	113"	125"	138"	150"	163"	175"	188"	191"	
48" FH	211	261	317	369	421	448	475	477	526	579	628	684	736	786	840	893	907	12
60" FH	225	284	343	397	450	480	489	531	561	615	668	726	780	834	891	943	959	14
72" FH	235	293	353	408	464	494	505	524	580	639	692	754	809	865	926	981	995	15
84" FH	242	298	362	422	479	510	523	542	599	660	718	781	840	897	960	1021	1035	16
96" FH	246	308	373	433	494	526	541	560	620	681	750	807	868	931	993	1056	1072	18
108" FH	250	314	381	447	509	542	556	576	641	702	768	836	899	962	1030	1093	1109	18
120" FH	257	322	390	458	523	557	574	593	660	723	791	863	928	995	1063	1149	1211	19
132" FH	260	329	402	470	540	574	591	612	678	749	829	909	979	1048	1119	1164	1185	20
144" FH	266	338	410	483	553	589	606	628	699	779	863	944	1016	1106	1219	1248	1296	22
Groover Insert—50% Surcharge																		
Dust Cover Valance	34	43	56	64	78	83	91	95	101	112	124	135	148	158	170	182	184	
Laserlite Single	95	104	126	151	176	187	200	202	224	247	271	296	320	346	368	393	398	
Double	149	167	206	248	289	308	331	335	371	414	454	497	537	580	619	662	671	

Group 2																		Single Vanes
WIDTH TO:	25"	38"	50"	63"	75"	78"	85"	88"	100"	113"	125"	138"	150"	163"	175"	188"	191"	
48" FH	250	315	379	442	507	540	573	576	636	702	764	833	896	960	1027	1091	1107	14
60" FH	267	340	413	483	552	587	627	628	695	764	833	908	974	1044	1116	1188	1204	16
72" FH	281	355	433	507	597	636	659	662	751	856	943	1022	1095	1158	1272	1358	1390	17
84" FH	289	371	450	531	627	668	692	695	790	901	991	1075	1152	1232	1338	1430	1462	18
96" FH	299	384	471	555	643	684	732	743	845	959	1058	1150	1236	1338	1442	1540	1577	19
108" FH	319	402	499	595	688	732	787	800	908	1031	1138	1236	1331	1440	1551	1657	1695	20
120" FH	322	424	530	634	737	784	842	854	970	1099	1214	1321	1425	1541	1660	1775	1812	22
132" FH	338	447	561	671	782	833	896	910	1032	1170	1293	1408	1517	1641	1767	1892	1932	22
144" FH	354	470	592	709	829	883	950	965	1095	1238	1369	1493	1609	1743	1877	2008	2051	24
Groover Insert—50% Surcharge																		
Dust Cover Valance	38	47	61	70	85	91	100	104	111	123	137	149	162	173	186	200	203	
Laserlite Single	104	114	138	167	194	206	219	223	246	272	299	326	352	380	404	432	437	
Double	163	184	227	274	319	340	364	369	408	456	500	546	590	637	681	729	739	

Group 3																		Single Vanes
WIDTH TO:	25"	38"	50"	63"	75"	78"	85"	88"	100"	113"	125"	138"	150"	163"	175"	188"	191"	
48" FH	260	322	390	450	512	546	579	581	642	702	765	832	892	947	1012	1073	1089	16
60" FH	270	338	410	482	552	588	627	629	697	769	838	914	982	1046	1118	1189	1207	18
72" FH	286	365	449	527	606	645	691	695	794	901	980	1087	1155	1236	1332	1423	1549	18
84" FH	303	392	486	572	664	707	755	761	868	982	1070	1177	1265	1358	1461	1563	1597	19
96" FH	313	411	512	611	707	753	811	823	936	1059	1169	1274	1370	1482	1595	1708	1746	22
108" FH	331	439	549	656	765	814	876	889	1010	1142	1263	1376	1482	1603	1727	1847	1887	22
120" FH	350	465	587	704	818	872	940	955	1083	1226	1356	1476	1592	1721	1856	1986	2028	24
132" FH	366	493	623	749	874	931	1006	1020	1156	1309	1447	1578	1703	1843	1985	2125	2168	25
144" FH	385	522	659	795	930	990	1070	1086	1231	1391	1538	1679	1813	1964	2115	2263	2310	27
Groover Insert—50% Surcharge																		
Dust Cover Valance	41	52	67	77	93	100	110	115	122	135	150	163	179	190	205	219	224	
Laserlite Single	115	125	152	184	212	226	242	245	271	299	328	358	405	418	445	476	482	
Double	180	201	249	301	350	373	401	406	449	501	550	601	649	701	750	801	812	

3 1/2" Fabric Verticals



Group 4																		Single Vanes	
WIDTH TO:	25"	38"	50"	63"	75"	78"	85"	88"	100"	113"	125"	138"	150"	163"	175"	188"	191"		
48" FH	277	353	432	509	583	621	662	667	738	815	889	971	1046	1122	1200	1276	1296	18	
60" FH	294	378	465	549	632	673	721	724	803	886	971	1058	1139	1225	1311	1396	1416	20	
72" FH	309	402	497	587	679	723	775	781	884	1001	1107	1201	1293	1396	1502	1605	1638	24	
84" FH	326	425	529	627	728	775	832	837	947	1075	1185	1290	1388	1499	1613	1725	1760	26	
96" FH	342	450	559	668	775	825	886	898	1012	1150	1268	1381	1488	1607	1647	1850	1889	30	
108" FH	358	474	593	708	824	877	943	955	1076	1223	1347	1467	1583	1711	1841	1970	2011	33	
120" FH	374	499	624	748	873	929	999	1011	1139	1293	1430	1557	1681	1813	1952	2088	2133	35	
132" FH	390	522	655	787	920	979	1055	1068	1203	1366	1509	1644	1775	1919	2064	2208	2253	37	
144" FH	406	545	688	829	968	1030	1110	1125	1268	1438	1588	1733	1870	2023	2177	2328	2374	41	
Groover Insert—50% Surcharge																			
Dust Cover Valance	50	63	81	93	113	120	133	138	148	164	182	198	216	230	248	266	270		
Laserlite Single	138	152	184	222	258	275	293	296	327	362	397	433	468	505	539	576	583		
Double	218	244	302	364	424	451	485	490	543	607	665	727	785	847	908	970	983		

Group 5																		Single Vanes	
WIDTH TO:	25"	38"	50"	63"	75"	78"	85"	88"	100"	113"	125"	138"	150"	163"	175"	188"	191"		
48" FH	309	396	485	571	655	697	747	751	833	919	1004	1094	1180	1265	1356	1442	1465	19	
60" FH	328	425	524	618	715	761	815	820	909	1005	1100	1201	1296	1391	1489	1588	1610	22	
72" FH	349	455	564	667	772	822	883	888	1004	1137	1253	1362	1467	1583	1703	1821	1859	25	
84" FH	368	482	600	716	831	884	950	955	1080	1224	1350	1470	1582	1709	1840	1965	2006	30	
96" FH	387	512	639	763	888	946	1015	1028	1158	1314	1449	1579	1702	1838	1979	2020	2158	33	
108" FH	407	539	678	811	944	1005	1084	1098	1236	1400	1546	1685	1869	1965	2115	2261	2306	36	
120" FH	426	568	716	858	1004	1069	1152	1166	1314	1487	1644	1789	1934	2090	2250	2406	2454	40	
132" FH	446	598	754	908	1061	1129	1218	1233	1391	1573	1739	1896	2049	2214	2385	2551	2599	44	
144" FH	464	627	793	958	1119	1191	1286	1303	1467	1660	1835	2004	2166	2340	2518	2694	2747	45	
Groover Insert—50% Surcharge																			
Dust Cover Valance	56	69	89	103	125	133	146	152	162	180	200	218	237	253	274	293	297		
Laserlite Single	152	167	203	244	283	301	322	326	360	400	437	477	516	556	592	633	642		
Double	239	268	332	401	466	497	533	540	597	667	731	800	864	932	998	1067	1081		

Group 6																		Single Vanes	
WIDTH TO:	25"	38"	50"	63"	75"	78"	85"	88"	100"	113"	125"	138"	150"	163"	175"	188"	191"		
48" FH	316	411	506	600	694	738	791	816	884	978	1069	1167	1261	1355	1450	1545	1568	22	
60" FH	340	448	554	661	765	814	874	902	979	1086	1189	1299	1403	1508	1693	1810	1847	24	
72" FH	364	482	602	719	835	889	956	988	1089	1234	1362	1484	1600	1729	1860	1988	2029	29	
84" FH	387	519	650	780	907	965	1040	1074	1185	1343	1482	1615	1743	1884	2028	2080	2111	33	
96" FH	414	554	697	838	980	1043	1122	1165	1283	1451	1604	1747	1896	2041	2198	2350	2396	36	
108" FH	437	591	747	899	1049	1117	1207	1252	1379	1559	1725	1880	1973	2198	2366	2528	2577	40	
120" FH	461	626	794	959	1122	1195	1290	1339	1473	1667	1843	2011	2177	2352	2533	2708	2760	45	
132" FH	484	663	841	1019	1195	1272	1375	1426	1569	1775	1961	2143	2319	2506	2420	2886	2942	48	
144" FH	508	697	889	1077	1266	1348	1457	1513	1664	1881	2081	2273	2461	2661	2864	3064	3123	52	
Groover Insert—50% Surcharge																			
Dust Cover Valance	61	76	98	113	137	146	161	168	179	198	219	239	261	279	300	322	327		
Laserlite Single	168	184	224	268	311	332	354	358	396	439	480	524	566	612	652	696	706		
Double	263	295	365	441	512	546	587	594	657	734	805	880	950	1025	1098	1173	1189		

2" PVC Verticals



Group A2 Curved, Standard II																		
WIDTH TO:	25"	38"	50"	63"	75"	78"	85"	88"	100"	113"	125"	138"	150"	163"	175"	188"	191"	Single Vanes
48" FH	273	334	394	455	510	543	573	576	631	688	745	806	865	922	983	1041	1055	17
60" FH	286	352	417	484	545	580	613	615	676	740	801	869	932	997	1064	1126	1140	18
72" FH	299	367	442	510	581	619	652	656	754	858	940	1015	1085	1169	1260	1346	1378	21
84" FH	310	385	464	540	613	653	692	697	795	909	1000	1078	1154	1243	1339	1427	1464	22
96" FH	323	402	488	569	647	688	734	745	848	964	1061	1146	1225	1324	1425	1524	1562	24
108" FH	334	417	510	597	684	728	773	784	893	1015	1118	1208	1293	1397	1506	1609	1648	25
120" FH	345	437	534	624	715	761	815	826	939	1065	1172	1272	1363	1470	1585	1692	1735	26
132" FH	355	453	558	652	749	798	852	866	984	1118	1231	1333	1429	1546	1664	1780	1820	28
144" FH	366	470	580	684	784	835	893	907	1030	1168	1288	1396	1498	1620	1742	1865	1906	29
Dust Cover Valance	47	58	75	88	106	113	124	129	138	153	170	185	202	214	231	248	252	
Laserlite Single	129	171	207	250	291	309	330	334	368	409	448	488	529	570	606	648	656	
Laserlite Double	203	275	341	410	478	509	546	553	612	684	749	819	884	955	1022	1093	1108	

Group C2 Cala, Cadiz																		
WIDTH TO:	25"	38"	50"	63"	75"	78"	85"	88"	100"	113"	125"	138"	150"	163"	175"	188"	191"	Single Vanes
48" FH	375	473	569	663	761	810	859	863	954	1053	1146	1249	1343	1439	1541	1637	1660	21
60" FH	400	510	619	724	827	881	940	943	1043	1146	1249	1361	1461	1566	1674	1781	1806	24
72" FH	421	533	649	761	895	953	989	993	1126	1283	1414	1532	1642	1737	1908	2037	2084	25
84" FH	434	556	676	797	941	1002	1039	1043	1185	1352	1486	1613	1728	1848	2006	2146	2193	26
96" FH	449	576	706	833	964	1026	1098	1115	1268	1438	1588	1726	1855	2006	2162	2310	2365	29
108" FH	478	602	748	893	1032	1098	1181	1200	1363	1546	1706	1854	1997	2159	2326	2486	2543	31
120" FH	483	635	795	951	1105	1177	1263	1281	1454	1649	1822	1981	2137	2311	2489	2661	2718	32
132" FH	506	670	841	1007	1174	1249	1345	1365	1548	1755	1940	2112	2276	2461	2650	2838	2898	33
144" FH	531	705	887	1064	1243	1323	1425	1448	1642	1858	2054	2239	2414	2614	2816	3012	3076	36
Dust Cover Valance	57	71	92	106	128	136	150	156	167	185	204	222	243	260	279	300	305	
Laserlite Single	156	171	207	250	291	309	330	334	368	409	448	488	528	570	606	648	656	
Laserlite Double	245	275	341	410	478	509	546	553	612	684	749	819	884	955	1022	1093	1108	

Group D2 Fresno, Madiera, Hampton, Natural Weave, Rustic, Wildwood																		
WIDTH TO:	25"	38"	50"	63"	75"	78"	85"	88"	100"	113"	125"	138"	150"	163"	175"	188"	191"	Single Vanes
48" FH	389	483	584	676	769	819	868	872	962	1054	1147	1247	1338	1420	1518	1609	1634	24
60" FH	405	508	615	723	829	882	940	944	1046	1153	1257	1371	1473	1568	1677	1784	1810	26
72" FH	428	548	673	790	909	968	1037	1041	1192	1352	1470	1631	1733	1855	1998	2134	2184	28
84" FH	455	588	729	858	996	1060	1132	1142	1303	1473	1606	1765	1898	2037	2191	2344	2394	29
96" FH	470	616	768	916	1061	1129	1217	1275	1404	1589	1753	1911	2055	2222	2393	2563	2618	32
108" FH	496	659	823	984	1147	1221	1314	1333	1514	1713	1894	2063	2223	2404	2590	2771	2831	33
120" FH	524	698	880	1055	1228	1307	1410	1432	1624	1840	2034	2214	2389	2582	2784	2978	3041	36
132" FH	549	740	934	1124	1311	1396	1509	1530	1734	1963	2171	2367	2554	2764	2977	3187	3252	38
144" FH	578	783	989	1193	1395	1485	1606	1628	1847	2087	2265	2518	2720	2945	3173	3394	3465	40
Dust Cover Valance	63	78	100	115	140	150	165	172	184	203	225	245	268	285	307	330	335	
Laserlite Single	172	188	228	275	318	339	363	367	406	449	492	537	581	627	667	713	723	
Laserlite Double	270	302	374	452	526	560	601	609	673	752	825	901	973	1051	1125	1201	1215	

2" PVC Horizontal—Blinds



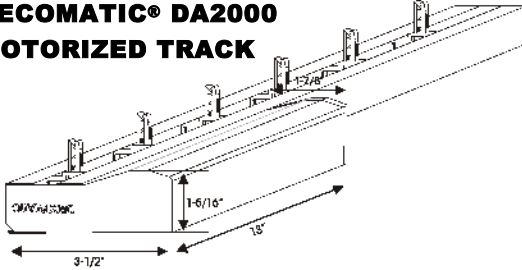
Group 1	<i>Curved PVC, Standard II</i>																			
WIDTH TO:	23	26	29	32	36	40	44	48	52	57	62	67	72	82	92	98	108	112	116	120
42	171	182	193	209	232	250	272	292	311	352	371	397	421	474	522	551	600	624	648	672
48	182	196	216	227	257	277	295	318	334	386	413	431	466	522	572	607	660	687	713	740
54	193	216	232	250	281	303	325	341	368	416	446	474	503	572	627	663	721	750	780	809
60	212	227	243	265	295	325	351	374	401	446	480	510	545	613	676	715	779	811	843	874
66	227	246	265	287	321	347	368	401	424	480	510	549	585	658	730	767	835	869	903	937
72	243	212	284	290	341	368	401	424	484	510	555	589	627	706	779	834	910	948	986	1024
78	250	277	295	325	359	397	424	457	518	545	585	627	661	752	832	881	960	999	1038	1078
84	272	291	314	341	386	416	442	480	545	579	624	661	706	797	881	933	1016	1058	1100	1141
90	284	307	334	359	404	446	476	510	571	609	658	700	744	843	935	987	1075	1119	1164	1208
96	295	325	356	382	424	465	502	541	609	646	695	737	786	888	982	1042	1135	1181	1228	1274
102	311	333	369	398	446	490	524	565	645	675	730	776	826	935	1036	1098	1196	1246	1295	1345
108	326	349	386	417	467	514	550	593	679	708	765	814	866	981	1087	1152	1256	1308	1359	1411
114	340	364	404	436	488	538	575	621	713	740	801	853	906	1026	1138	1206	1315	1370	1424	1478
120	354	380	422	455	510	561	600	648	748	773	836	890	946	1073	1190	1261	1374	1432	1488	1545

Group 2	<i>Cala, Cadiz</i>																			
WIDTH TO:	23	26	29	32	36	40	44	48	52	57	62	67	72	82	92	98	108	112	116	120
42	191	204	216	234	259	280	304	327	347	393	415	444	471	529	584	616	670	697	725	751
48	204	219	242	254	288	309	329	355	373	431	462	482	521	584	639	678	738	768	797	827
54	216	242	259	280	314	339	363	381	411	465	499	529	563	639	701	741	806	838	872	904
60	237	254	271	296	329	363	392	417	448	499	537	570	609	685	755	800	870	906	941	977
66	254	275	296	321	359	388	411	448	474	537	570	613	654	735	816	857	933	971	1009	1047
72	271	236	318	324	381	411	448	474	541	570	621	658	701	790	870	932	1017	1060	1103	1145
78	280	309	329	363	402	444	474	511	580	609	654	701	739	841	929	984	1073	1117	1161	1205
84	304	326	352	381	431	465	493	537	609	647	697	739	790	890	985	1043	1136	1183	1229	1276
90	318	343	373	402	451	499	532	570	638	681	735	783	831	942	1045	1103	1202	1251	1300	1350
96	329	363	398	427	474	520	561	605	681	722	777	823	879	992	1098	1164	1268	1320	1372	1424
102	348	372	413	445	499	548	586	632	721	755	815	868	923	1045	1158	1227	1337	1392	1447	1503
108	364	390	432	466	522	574	614	663	759	791	855	910	968	1096	1215	1287	1403	1462	1519	1578
114	380	407	452	487	546	601	643	694	797	827	895	953	1013	1147	1272	1348	1470	1531	1591	1652
120	396	424	471	508	570	627	671	725	835	864	935	995	1058	1199	1330	1409	1537	1600	1664	1727

Group 3	<i>Fresno, Madiera, Hampton, Natural Weave, Rustic, Wildwood</i>																			
WIDTH TO:	23	26	29	32	36	40	44	48	52	57	62	67	72	82	92	98	108	112	116	120
42	201	214	227	246	273	295	320	344	365	414	437	467	496	558	614	649	706	734	762	791
48	214	230	254	267	302	326	347	374	393	454	486	507	549	614	674	714	776	808	839	871
54	227	254	273	295	330	357	382	402	433	490	525	558	593	674	738	780	848	883	917	952
60	249	267	285	311	347	382	412	439	471	525	565	600	641	721	795	842	916	954	991	1028
66	267	289	311	338	377	408	433	471	498	565	600	646	688	774	859	902	982	1022	1062	1103
72	285	249	334	341	402	433	471	498	570	600	653	692	738	831	917	981	1071	1116	1160	1205
78	295	326	347	382	423	467	498	538	610	641	688	738	778	885	978	1036	1129	1175	1222	1268
84	320	342	370	402	454	490	519	565	641	681	734	778	831	937	1037	1098	1196	1245	1294	1343
90	334	362	393	423	475	525	560	600	672	717	774	824	875	992	1099	1161	1265	1317	1369	1421
96	347	382	419	450	498	547	591	637	717	761	818	866	925	1045	1156	1225	1335	1390	1444	1499
102	366	392	434	468	525	576	617	665	759	794	858	914	971	1100	1219	1291	1408	1465	1524	1582
108	383	410	455	490	550	604	647	698	799	833	900	958	1019	1153	1279	1356	1477	1538	1599	1661
114	400	428	475	512	574	633	677	730	839	871	942	1003	1066	1208	1339	1420	1547	1611	1675	1739
120	416	447	496	535	600	660	706	763	879	909	984	1047	1114	1262	1400	1484	1618	1684	1751	1818

Decomatic Vertical Headrail Upgrades

DECOMATIC® DA2000 MOTORIZED TRACK



Minimum Width: 15"
Maximum Width: 240"
Maximum Blind Weight: 65 lbs
Max. Vane Weight: 1-1/4 lbs.
Installation Height: Maximum 16"

Extrusion Color: Clear Anodized, White
Vane Spacing Available: 2", 3-1/2", 4", 5" and custom sizes up to 8"

Control Options: Wall Switch, IR (infrared), RF (radio), Sun Sensor, Timer, RS-232

Motor Location: Left rear
Stack Options: One-way, Split, Center
Input Voltage: 12v
Power Consumption: 0.2-1.0 A
Tractive Power: 140 N
Torque of Tilt: 30 Ncm
Operating Speed: Approximate 10' per minute

General - Heavy-duty vertical system capable of rotating and traversing at widths up to 240" for residential and commercial applications. The hook replacement features is provided with Decomatic tracks.

Operation - Available in one-way, split draw, center stack and off-center split.

Specialty Applications - Curve arch, bow or bay curve, motorized, slope (angle) tracks, one wand control and top and bottom tracks (wall mounted and skylight).

Headrail - Made of extruded aluminum alloy 606 3-T5, 1-1/2" wide X 1" high. The extrusion has a normal wall thickness of .045" The finish is anodized, white or bronze.

Tilt Rod - Made of extruded aluminum alloy 6063-T5, 1-4" diameter, single groove.

Louver Carrier - Each carrier is 5-16" wide with two wheels, molded of self lubricating plastic such as celcon. The carriers have a geared clutch system for overload protection and a steel clutch spring to reinforce positive action. There also is a unique stabilizer bar de-signed to fit into the extruded slot in the aluminum headrail to provide smooth traversing along the width of the headrail. The hooks of the carrier are made of clear, high ultra-violet resistant polycarbonate and are replaceable even while the unit is installed. The carriers provide the louvers with 185° rotation capability to provide full louver closure and will stay in position unless reset.

The rotation chain is made of celcon beads molded onto a nylon cord or #6 metal chain. One full cycle of the control chain (13-1/2") will self align the louvers.

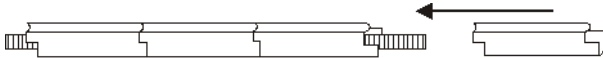
Spacer Links - The spacers, made of flexible, corrosion proof, stainless steel, are interlocked between carriers to provide smooth traversing. Spacers are 6.03 mm .19 mm. Spacing systems are designed for 2", 2-1/2", 3", 3-1/2", 4" and 5" louver widths. Special spacing is available upon request. Spacing is equal on all louver widths.

End Caps - All Decomatic tracks are manufactured with completely covered end caps, concealing internal parts for a custom, finished appearance. The end caps are molded of self lubrication plastic such a celcon and their unique design allows for only 1/4" light gap on the control of inside mount vertical. The Decomatic system is available with standard direct drive 1-to-1 rotation mechanism (13-1 / 2" of chain required to rotate 180°), or a 4-to-1 ratio rotation mechanism (46" of chain required to rotate 180°).

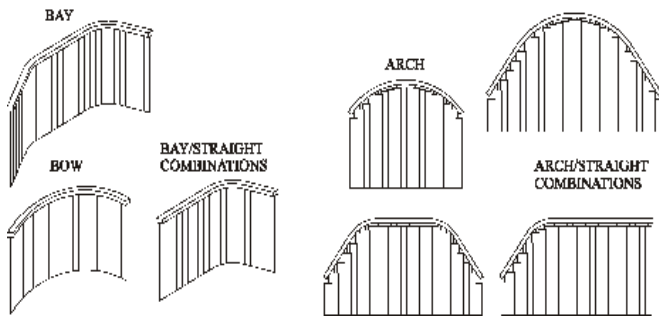
Stack - 5-16" wide carrier and 1/4" light gap end cap allows for very tight stacking. 122" one-way draw track stacks in 15" space.

DECOMATIC CURVED TRACK SYSTEM

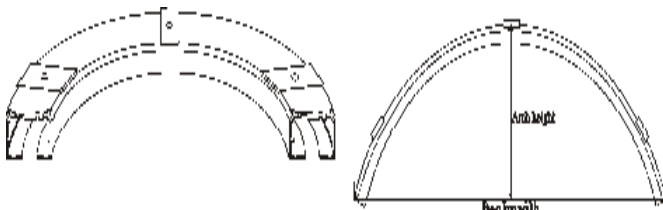
A specially designed shaft delivers smooth, quiet operation with 100% rotation and traversing.



POSSIBLE CURVING COMBINATIONS

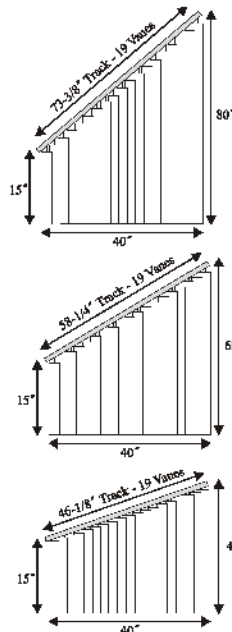


Options – Motorization – unit must have 18" of straight track in one end for motorization
Colors – Anodized aluminum



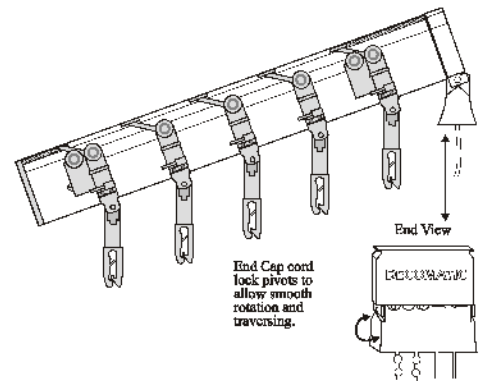
Arch height can't exceed 1/8 of base line width

DECOMATIC SLOPE OR ANGLE TRACK SYSTEM



The number of vanes is determined by the bottom width of the window opening and will stay the same regardless of angle or length of track.

NOTE: If a standard unit is mounted directly below slope track and the standard unit is the same width as the bottom width of the slope track, both units will have the same vane count.



End Cap cord lock pivots to allow smooth rotation and traversing.

Minimum Width: 10"
Maximum Width: 240"
Maximum Angle: 55°, up to 64° by cutting corner of vane

Maximum Blind Weight: 45 lbs
Maximum Vane Weight: 10 oz.

Extrusion Color: Clear Anodized, White, Bronze

Vane Spacing Available: 2", 3-1/2", 4", 5"

Control Options: Cord/Chain, DA1000, DA2000

Control Positions: High Side, Low Side

Stack Options: One-Way (must stack to high side)

Call For Quote for All Custom Specialty Vertical Headrails
 1-800-533-9464

Quality



We are dedicated to producing quality window treatments delivered on time and with a high level of service and responsiveness. Our Customer Service teams are trained to respond to your needs. Call us...WE'RE HERE FOR YOU!

Headrails Dealer Net Cost:
Decomatic (3.5") \$1.00 per inch
Versatrak (3.5") \$0.80 per inch
Versatrak (2") \$1.60 per inch

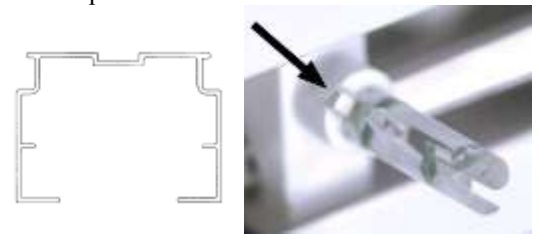
Versatrak Headrail System (standard)

Quick Fix: Features a replaceable stem for quick and easy field fixes without disassembling the headrail.

Self-Aligning: Simply rotate the operating chain to realign the carriers.

Secure: Pinion gear will remain in sync if the carriers are strained by over-rotation of vanes

Replaceable Stem



ONE WAY DRAW*			*VANE COUNT AND STACKING CHART											
BLIND WIDTH IN INCHES	NO. OF VANES	APPROX. STACK SPACE INCHES	BLIND WIDTH IN INCHES	NO. OF VANES	APPROX. STACK SPACE INCHES	BLIND WIDTH IN INCHES	NO. OF VANES	APPROX. STACK SPACE INCHES	BLIND WIDTH IN INCHES	NO. OF VANES	APPROX. STACK SPACE INCHES	BLIND WIDTH IN INCHES	NO. OF VANES	APPROX. STACK SPACE INCHES
16	5	4	52	17	9-1/4	88	29	14-1/2	124	40	19-3/8	160	52	24-5/8
18	6	4-1/2	54	18	9-3/4	90	29	14-1/2	126	41	19-3/4	162	52	24-5/8
20	7	4-7/8	56	18	9-3/4	92	30	15	128	41	19-3/4	164	53	25-1/2
22	7	4-7/8	58	19	10-1/8	94	31	15-3/8	130	42	20-1/4	166	53	25-1/2
24	8	5-3/8	60	20	10-5/8	96	31	15-3/8	132	43	20-5/8	168	44	26
26	9	5-3/4	62	20	10-5/8	98	32	15-7/8	134	43	20-5/8	170	55	26-1/2
28	10	6-1/4	64	21	11	100	33	16-1/4	136	44	21-1/8	172	55	27
30	10	6-1/4	66	22	11-1/2	102	33	16-1/4	138	45	21-1/2	174	56	27
32	11	6-5/8	68	22	11-1/2	104	34	16-3/4	140	45	21-1/2	176	57	27-1/2
34	11	6-5/8	70	23	11-7/8	106	34	16-3/4	142	46	22	178	57	27-1/2
36	12	7-1/8	72	24	12-3/8	108	35	17-1/8	144	47	22-3/8	180	58	28
38	13	7-1/2	74	24	12-3/8	110	36	17-5/8	146	47	22-3/8	182	59	28
40	13	7-1/2	76	25	12-3/4	112	36	17-5/4	148	48	22-7/8	184	59	28-1/2
42	14	8	78	25	12-3/4	114	37	18	150	48	22-7/8	186	60	29
44	15	8-3/8	80	26	13-1/4	116	38	18-1/2	152	49	23-1/4	188	61	29
46	15	8-3/8	82	27	13-5/8	118	38	18-1/2	154	50	23-3/4	190	61	29-1/2
48	16	8-7/8	84	27	13-5/8	120	39	18-7/8	156	50	23-3/4	192	62	29-1/2
50	16	8-7/8	86	28	14-1/8	122	39	18-7/8	158	51	24	194	62	30

* Chart gives a close approximations.

Warranty—Headrails carry a 5 year Limited Warranty against defects in materials and workmanship. All vertical vanes carry a 3 year limited warranty against defects in materials and workmanship. These warranties apply to residential use. Normal wear and tear is not considered a warranty issue.

2" and 3 1/2" VERTICAL BLIND ORDER FORM

DATE _____ P.O. NO. _____
 SIDEMARK _____

ORDER#
CUSTOMER P.O. #
PAGE ____ OF ____

CHARGE TO: _____
 NAME _____
 ADDRESS _____
 CITY _____
 STATE _____ Zip _____

SHIP TO: _____
 PHONE () -

SPECIAL INSTRUCTIONS: _____

LINE	QTY	IB/ OB/Side	WIDTH	LENGTH	CONTROL			Wand? Yor N	FABRIC INFORMATION		FH or INS?	Crowning Impressions Valance		OPTIONS, IF ANY
					Center	Side Stack	Opposite Stack		COLOR NAME	COLOR #		Color #	Color Name	
1														
2														
3														
4														
5														
6														
7														

PLEASE FAX ORDERS TO OXFORD HOUSE CUSTOMER SERVICE AT 1-765-884-3274

ORDERED BY _____
 For orders placed by phone, dealers will assume all responsibility.
 Custom orders cannot be canceled once they are in production.

2" HORIZONTAL BLIND ORDER FORM

DATE _____ P.O. NO. _____
 SIDEMARK _____

ORDER #
CUSTOMER P.O. #
PAGE _____ OF _____

CHARGE TO: _____
 NAME _____
 ADDRESS _____
 CITY _____
 STATE _____ ZIP _____

SHIP TO: _____

 PHONE (_____) _____ - _____

SPECIAL INSTRUCTIONS: _____

LINE	QTY	IB/ OB/Side	WIDTH	LENGTH	CONTROL		Wand? Yor N	FABRIC INFORMATION		Hold- downs	OPTIONS, IF ANY
					Tilt	Lift		COLOR NAME	COLOR #		
1											
2											
3											
4											
5											
6											
7											

PLEASE FAX ORDERS TO OXFORD HOUSE CUSTOMER SERVICE AT 1-765-884-3274

ORDERED BY _____

For orders placed by phone, dealers will assume all responsibility.
 Custom orders cannot be canceled once they are in production.